



Greenwich House

Greenwich House Music School Venue Package



Greenwich House Music School is located in the heart of the historic West Village, on a tree-lined street of notable late-19th and early 20th Century Italianate brick and brownstone buildings. **Nos. 46 & 44 Barrow Street**, a landmarked double-townhouse building, houses the school and cultural arts center.

- ❖ MTA New York City Subway leaves you within close walking distance to our site:
#1 train to Christopher Street/Sheridan Square or ABCDEF & M trains to West 4th Street
- ❖ Special rates for students with valid student ID
- ❖ NEW: Due to social distancing restrictions related to COVID-19, our venue capacity is now 10 people with no audience permitted. Our facility has been upgraded to offer livestreaming of events and concerts with professional audio and video, giving friends, family, and fans the option to attend your event safely from their homes across the country and around the world

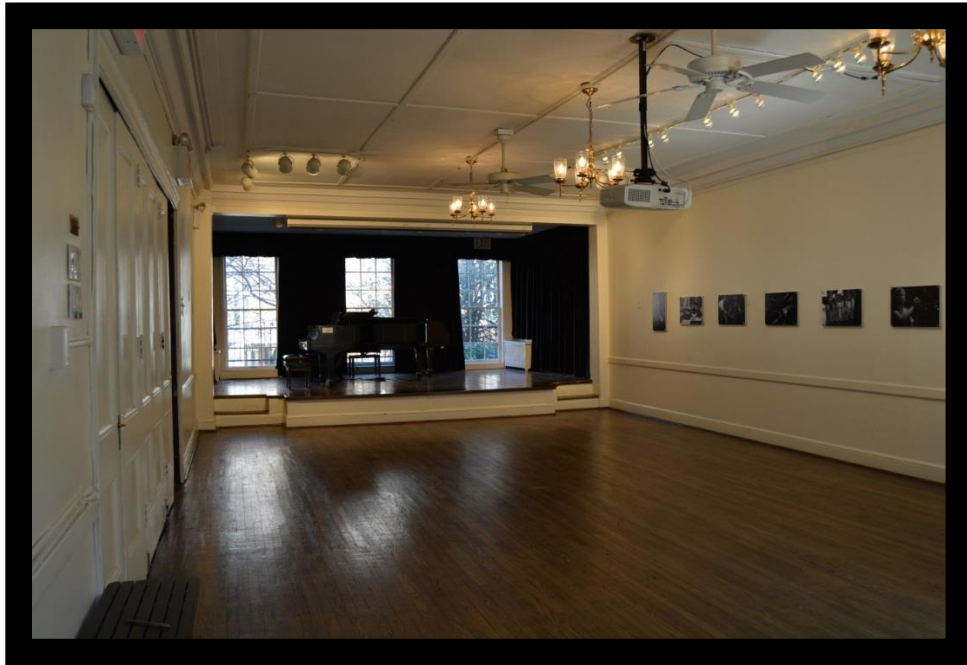
Our rental facilities accommodate all types of basic and specialized event needs

- ❖ Recitals, concerts, and screenings
- ❖ Group classes, musical ensembles and small orchestras
- ❖ Business meetings, symposia, workshops and team-building events
- ❖ Fundraising, social receptions and banquets
- ❖ Poetry, theatre and musical theatre readings and performances
- ❖ Weddings (additional fees for weddings, please contact PM)
- ❖ Audio-visual presentations and recordings
- ❖ Practice and rehearsal spaces
- ❖ Music recordings, demos, and music reproduction sessions
- ❖ Competitions and auditions
- ❖ Memorial services

Greenwich House Music School
Rachel Black, Director
Andrew Jordan, Production Manager

www.greenwichhousemusicschool.org **212-242-4770**
rblack@greenwichhouse.org
ajordan@greenwichhouse.org

The Renee Weiler Concert Hall



Due to current COVID-19 guidelines, all events are livestream-only and restricted to 10 people.
Post COVID, the recital hall will have seating available for 84 guests.



The hall has two Steinway Grand Pianos [Model B]



The hall set up for a typical concert

The Renee Weiler Concert Hall *(continued)*

Excellent acoustics and old-world charm in an intimate setting provide a unique experience for both performer and audience member alike.

Stage Area	20 x 15 feet (width x depth)
Seating Area	20 x 38 feet
Seating	No audience seating is available at this time. If indoor gathering restrictions are lifted, with social distancing measures in place, the hall will have seating for up to 14 pods with a max of 20 people (facial masks must be worn). Post COVID, the recital hall will have seating available for 84 guests.
Pianos	two Steinway Model B pianos (cannot be removed from stage)
Availability	Depending on scheduled school activities, but in general, weekdays 6-10 pm and weekends 9 am to 10 pm
Setup services	seating, music stands, lighting, audio, livestreaming if needed

Rental Fees (SPECIAL COVID RATES)	Livestream Only Rental	\$350
	Standard Rental	\$500
	Standard Rental with Garden	\$600
	Student/Nonprofit	\$400
	Student/Nonprofit with Garden	\$500

Special Rates: *Must produce Student ID for student rate. Speak to us about special rates for all-day and multi-date events.*

Time allotment	4 hours total on event date; \$125/hr for each additional hour, GHMS does not pro-rate for under 4 hours.	
Special setup services available and fees	Piano tuning	\$100 one piano; \$150 both pianos
	Production Assistant	\$20/hr

Greenwich House Music School

Venue Guidelines and Technical Specifications

Concert Hall & Garden Sound Limitations

- The maximum sound level within the Renee Weiler Concert Hall and/or the backyard garden is **85dBA** for sound checks and performance
- There is no amplified sound allowed in the garden or in the recital hall before **10:30am** or after our strict **10:00pm** curfew

Stage Dimensions

- 20' wide x 15' deep (1' from ground)
- Two (2) Steinway model B pianos on stage (cannot be removed)

Recital Hall

- Capacity is 84 seats. Due to COVID-19 restrictions, no audiences are permitted in the hall. If indoor gathering restrictions are lifted but social distancing measures are still in place, up to 14 pods with a max of 20 people
- 20' x 38' seating area.
- Recital Hall is air conditioned.

Dressing Rooms

We thank you in advance for remembering that because the venue is housed inside a historic building, our facilities are simple and space is somewhat limited.

- One (1) dressing room is located on the second floor of the music school. There is one (1) bathroom inside the dressing room
- There are no showers on site
- The nominal size of the dressing room is 20' long x 10' wide
- The dressing room is air-conditioned

Audience Guidelines

- Due to current COVID-19 restrictions, audiences are not permitted in the recital hall. All audience members (once permitted), crew, guests, and artists must wear facial masks and practice social distancing at all times.
- If indoor gathering restrictions are lifted but social distancing measures are still in place, audience chairs must be set up 6' way from the stage, with 7 rows allowed, with a limit of up to 28 chairs.
- All audience members, crew, guests and artists must answer the health questionnaire before entering the venue which will be administered by production staff.
- The production staff reserve the right to prohibit any audience member, crew, guest or artist from entering the venue if they answer yes to any of the questions related to COVID-19 or COVID-19 symptoms.
- Greenwich House Music School reserves the right to take temperature checks of any audience member, crew, guest, or artists before entering the venue.

Sound Reinforcement:

- PA System: 2 Alto TS112A 12" loudspeakers (on black pole stands)
- Soundboard: Allen and Heath QU 16 (16 inputs + EFX)
- Monitors: Three (3) NADY PM 200 (1 powered, plus 2 thru speakers); two (2) Behringer B208 8".
- Two (2) Whirlwind DIRECT direct boxes
- Four (4) Shure SM58 microphones
- Two (2) Shure Beta 58 microphones
- Four (4) Shure SM57 microphones
- One (1) Audix OM5 microphone
- Two (2) Shure - SM81 microphones
- One (1) Shure VP88 stereo microphone
- One (1) Shure Beta 52A microphone

House Backline:

- One (1) Tama Star Classic (20" Kick, 12" Rack Tom, 14" Floor Tom, 14"x5" Snare)
- One (1) Pearl EX Export Series (22" Kick, 12" & 13" Rack Toms, 16" Floor Tom, 14"x5" Snare)
- One (1) Gretsch Kick Drum, 18"
- Two (2) Steinway B model grand pianos (cannot be moved from stage)
- One (1) Ampeg BA-115 bass amp
- One (1) Roland KC-60 keyboard amp
- One (1) Fender Champion 100W guitar amp
- One (1) Fender Blues Jr 15 W guitar amp
- Two (2) Vox AD50VT guitar amp
- One (1) Pair of congas LP Cosmic Percussion
- One (1) Jenco Decatur Vibraphone
- One (1) Venus 75 Traditionnal Harp
- One (1) Troubadour V by Lyon & Healy Harp
- Eleven (11) microphone stands

Video Equipment:

- Blu-ray/DVD Player
- Panasonic PT-AR100u Projector
- Da-Lite 78 x 139" Front Projection Screen

Livestreaming Equipment and Software:

- One (1) Apple Macbook
- Five (5) AVerMedia - Live Streamer DUO Webcams
- Open Broadcaster Software

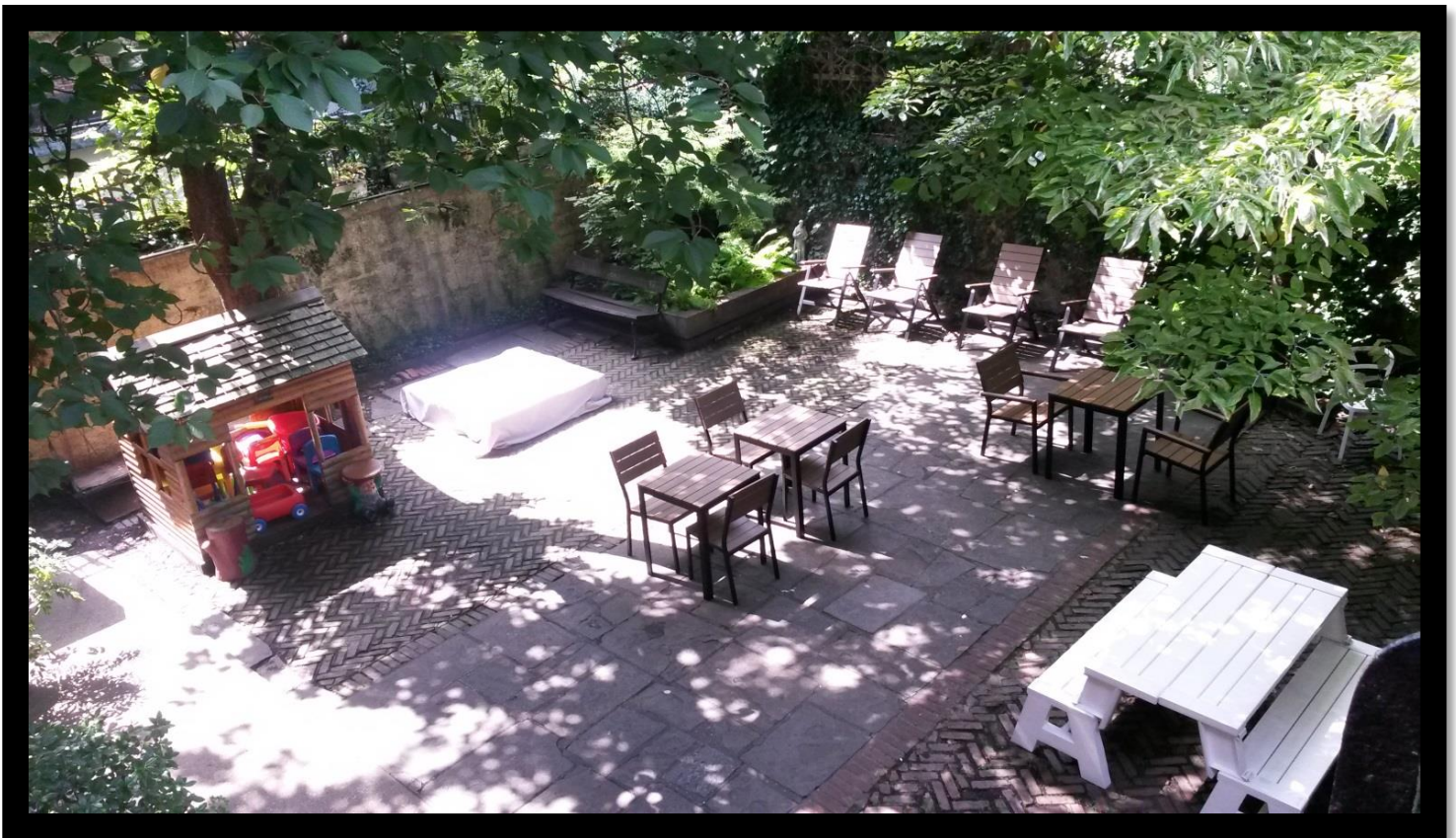
The Green Room



The Green Room 20 x 10 feet

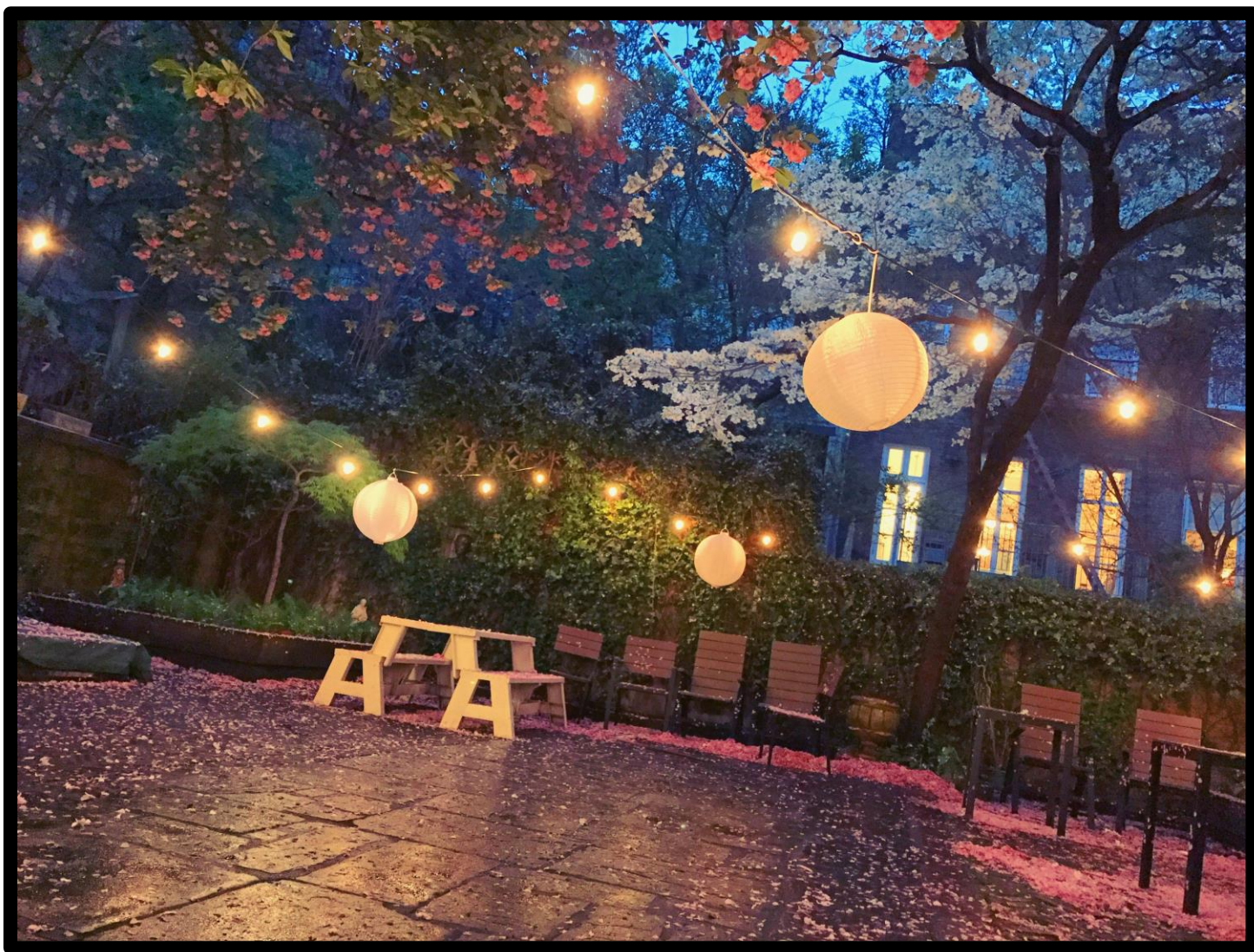
The Green Room (which serves as an art room during school hours) is a very comfortable air-conditioned space adjacent to the stage. Ideal as a dressing room and greeting chamber, with a capacity for 6 artists with facial masks. The Green Room also has a private bathroom facility and doors to the stage and foyer.

The Backyard Garden



The Backyard Garden 36 x 24 feet

This picturesque, cloistered double-wide town house garden has a seating capacity of up to 28 guests, due to social distancing restrictions related to COVID-19. All guests must wear facial coverings. With beautiful flowering trees and the old stone houses of the West Village as a background, this is the perfect locale for meet-and-greets, receptions and plain-air musical occasions. Available as a reception area for concert hall rentals, birthday parties, weddings, and open-air concerts (no amplification) for a rental fee of \$600. Some restrictions apply. In the event of rain, the Renee Weiler Recital Hall serves as the indoor backup space.



For more information on renting the Recital Hall, the Backyard Garden, or any of our 14 practice rooms, please contact Andrew Jordan, Production Manager, ajordan@greenwichhouse.org or call 212-242-4770. Site visits can be arranged before booking. For more information on the educational programs of Greenwich House Music School visit us at greenwichhousemusicschool.org

THANK YOU.