



**Greenwich House**

## **Greenwich House Music School Venue Package**



**Greenwich House Music School** is located in the heart of the historic West Village, on a tree-lined street of notable late-19th and early 20th Century Italianate brick and brownstone buildings. **Nos. 46 & 44 Barrow Street**, a landmarked double-townhouse building, houses the school and cultural arts center.

- ❖ MTA New York City Subway leaves you within close walking distance to our site:  
#1 train to Christopher Street/Sheridan Square or ABCDEF & M trains to West 4<sup>th</sup> Street
- ❖ Special rates for students with valid student ID
- ❖ Our facility has been upgraded to offer livestreaming of events and concerts with professional audio and video, giving friends, family, and fans the option to attend your event safely from their homes across the country and around the world for an additional fee

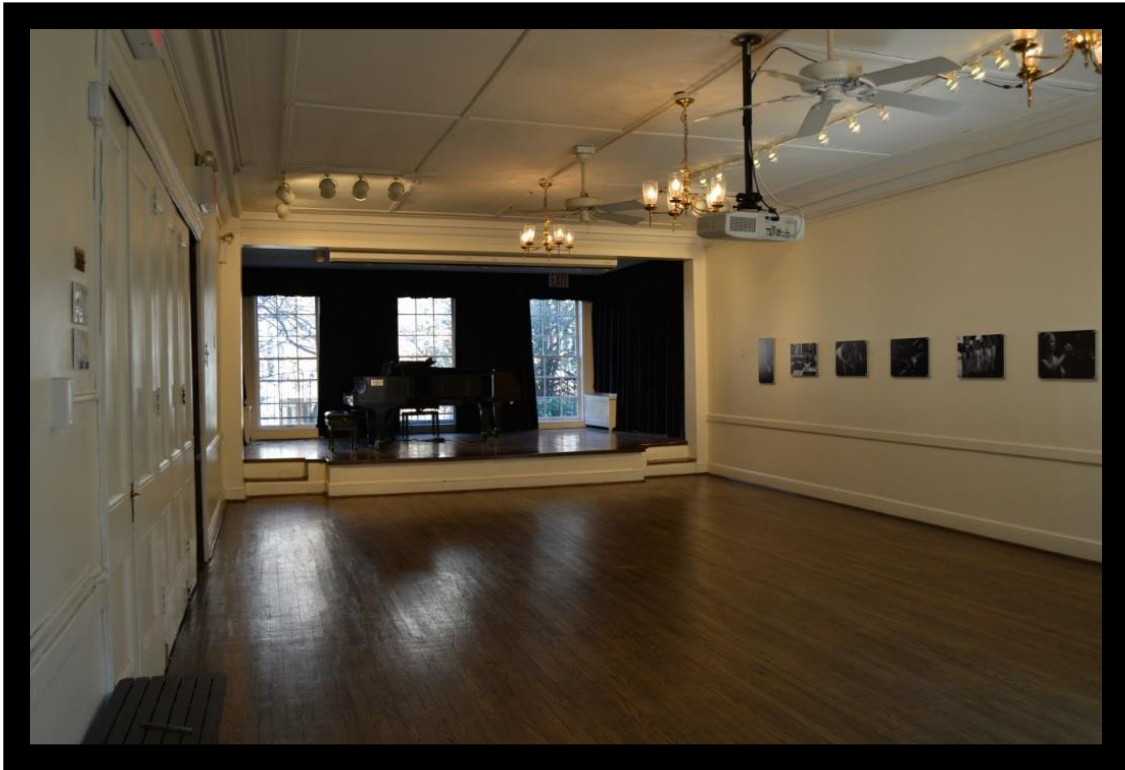
**Our rental facilities accommodate all types of basic and specialized event needs**

- ❖ Recitals, concerts, and screenings
- ❖ Group classes, musical ensembles and small orchestras
- ❖ Business meetings, symposia, workshops and team-building events
- ❖ Fundraising, social receptions and banquets
- ❖ Poetry, theatre and musical theatre readings and performances
- ❖ Weddings (additional fees for weddings, please contact PM)
- ❖ Audio-visual presentations and recordings
- ❖ Practice and rehearsal spaces
- ❖ Music recordings, demos, and livestreaming
- ❖ Competitions and auditions
- ❖ Memorial services

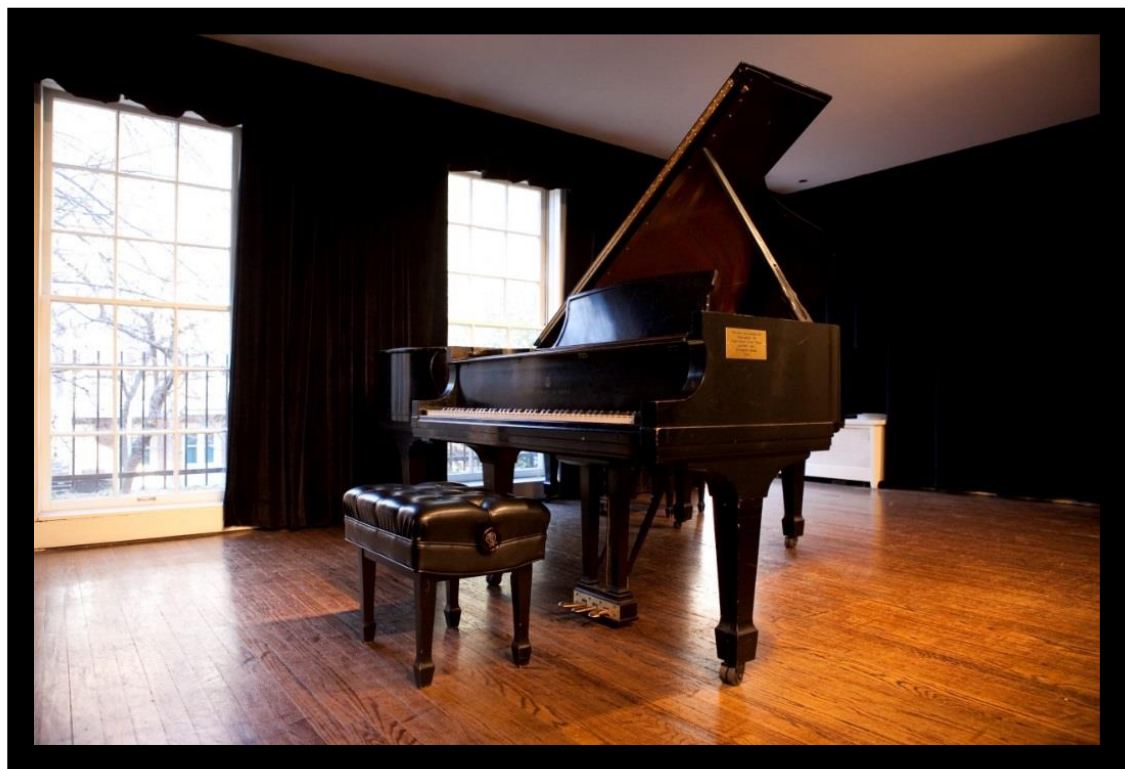
**Greenwich House Music School**  
**Rachel Black, Director**  
**Andrew Jordan, Production Manager**

[www.greenwichhousemusicschool.org](http://www.greenwichhousemusicschool.org) **212-242-4770**  
[rblack@greenwichhouse.org](mailto:rblack@greenwichhouse.org)  
[ajordan@greenwichhouse.org](mailto:ajordan@greenwichhouse.org)

## The Recital Hall



The recital hall has seating available for 84 guests



The recital hall has two Steinway Grand Pianos [Model B]





**The hall set up for a typical concert**

### **The Recital Hall** *(continued)*

**Excellent acoustics and old-world charm in an intimate setting provide a unique experience for both performer and audience member alike.**

Stage Area	20 x 15 feet (width x depth)
Seating Area	20 x 38 feet
Seating	The hall has seating for up to 84 people
Pianos	Two Steinway Model B pianos (cannot be removed from stage)
Availability	Depending on scheduled school activities, but in general, weekdays 5-10 pm and weekends 9 am to 10 pm
Setup services	seating, music stands, lighting, audio, livestreaming + recording also available for an additional charge.

Rental Fees	Standard Rental	\$750
	Standard Rental with Garden	\$850
	Student/Nonprofit	\$650
	Student/Nonprofit with Garden	\$750

**Special Rates:** *Must produce Student ID for student rate and a 501c3 for non-profit rate. Please inquire about special rates for all-day and multi-date events.*

Time allotment	4 hours total on event date; \$175/hr for each additional hour, GHMS does not pro-rate for under 4 hours.	
Special setup services available and fees	Piano tuning	\$125 one piano; \$175 both pianos
	Livestreaming/Recording	\$200
	Production Assistant	\$30/hr

## Greenwich House Music School Venue Guidelines and Technical Specifications

### Concert Hall & Garden Sound Limitations

- The maximum sound level within the recital hall and/or the backyard garden is **85dBA** for sound checks and performance
- There is no amplified sound allowed in the garden or in the recital hall before **10:30am** or after our strict **10:00pm** curfew

### Stage Dimensions

- 20' wide x 15' deep (1' from ground)
- Two (2) Steinway model B pianos on stage (cannot be removed)

### Recital Hall

- Capacity is 84 seats
- 20' x 38' seating area
- Recital Hall is air conditioned

### Dressing Rooms

*We thank you in advance for remembering that because the venue is housed inside a historic building, our facilities are simple and space is somewhat limited.*

- One (1) dressing room is located on the second floor of the music school. There is one (1) bathroom inside the dressing room
- There are no showers on site
- The nominal size of the dressing room is 20' long x 10' wide
- The dressing room is air-conditioned

### Sound Reinforcement:

- PA System: 2 Alto TS112A 12" loudspeakers (on black pole stands)
- Soundboard: Allen and Heath QU 16 (16 inputs + EFX)
- Monitors: Three (3) NADY PM 200 (1 powered, plus 2 thru speakers); two (2) Behringer B208 8".
- Two (2) Whirlwind DIRECT direct boxes
- Four (4) Shure SM58 microphones

- Two (2) Shure Beta 58 microphones
- Four (4) Shure SM57 microphones
- One (1) Audix OM5 microphone
- Two (2) Shure - SM81 microphones
- One (1) Shure VP88 stereo microphone
- One (1) Shure Beta 52A microphone

#### **House Backline:**

- One (1) Tama Star Classic (20" Kick, 12" Rack Tom, 14" Floor Tom, 14"x5" Snare)
- One (1) Pearl EX Export Series (22" Kick, 12" & 13" Rack Toms, 16" Floor Tom, 14"x5" Snare)
- One (1) Mapex V-Series Kick Drum, 18"
- Two (2) Steinway B model grand pianos (cannot be moved from stage)
- One (1) Ampeg BA-115 bass amp
- One (1) Roland KC-60 keyboard amp
- One (1) Fender Champion 100W guitar amp
- One (1) Fender Blues Jr 15 W guitar amp
- Two (2) Vox AD50VT guitar amp
- One (1) Pair of congas LP Cosmic Percussion
- One (1) Jenco Decatur Vibraphone
- One (1) Venus 75 Traditionnal Harp
- One (1) Troubadour V by Lyon & Healy Harp
- Eleven (11) microphone stands

#### **Video Equipment:**

- Blu-ray/DVD Player
- Panasonic PT-AR100u Projector
- Da-Lite 78 x 139" Front Projection Screen

#### **Livestreaming Equipment and Software:**

- One (1) Apple Macbook
- Three (3) Sony HDR-CX405
- One (1) Blackmagicdesign ATEM Mini Pro camera switcher
- Open Broadcaster Software

#### **Tables and Seating:**

- Six (6) 6-foot plastic folding tables
- Six (6) round cocktail style folding tables
- Eighty four (84) metal folding chairs, plus additional for stage and green room
- Four (4) black wooden stools
- Three (3) cello chairs

#### **COVID-19 Guidelines:**

- GHMS ***recommends*** but does not require wearing facial coverings/masks while inside the Music School. Facial coverings are required if you have recently been exposed to COVID-19 within the past five days.
- If you are sick, stay home. If a visitor becomes or appears sick at the school, they will be asked to leave.

## The Green Room

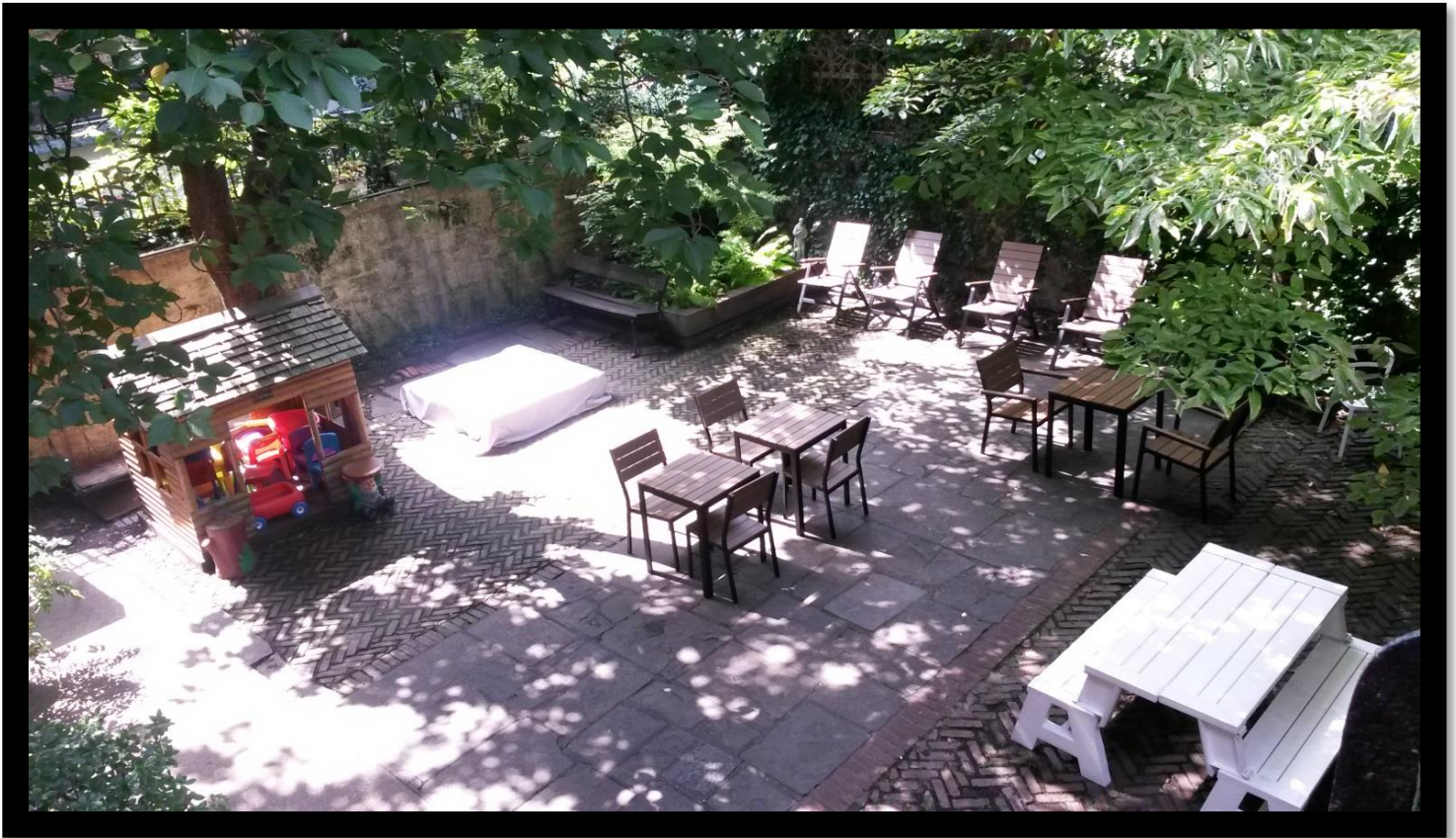


The Green Room      20 x 10 feet

The Green Room (which serves as an art room during school hours) is a very comfortable air-conditioned space adjacent to the stage. Ideal as a dressing room and greeting chamber. The Green Room also has a private bathroom facility and doors to the stage and foyer.



## The Backyard Garden



The Backyard Garden 36 x 24 feet

This picturesque, cloistered double-wide town house garden has a seating capacity of up to 84 guests. With beautiful flowering trees and the old stone houses of the West Village as a background, this is the perfect locale for meet-and-greets, receptions and plain-air musical occasions. Available as a reception area for concert hall rentals, birthday parties, weddings, and open-air concerts (no amplification) for a rental fee of \$850. Some restrictions apply. In the event of rain, the recital hall serves as the indoor backup space.





For more information on renting the recital hall, the backyard garden, or any of our 14 practice rooms, please contact Andrew Jordan, Production Manager, [ajordan@greenwichhouse.org](mailto:ajordan@greenwichhouse.org) or call 212-242-4770. Site visits can be arranged before booking. For more information on the educational programs of Greenwich House Music School visit us at [greenwichhousemusicschool.org](http://greenwichhousemusicschool.org)

THANK YOU.