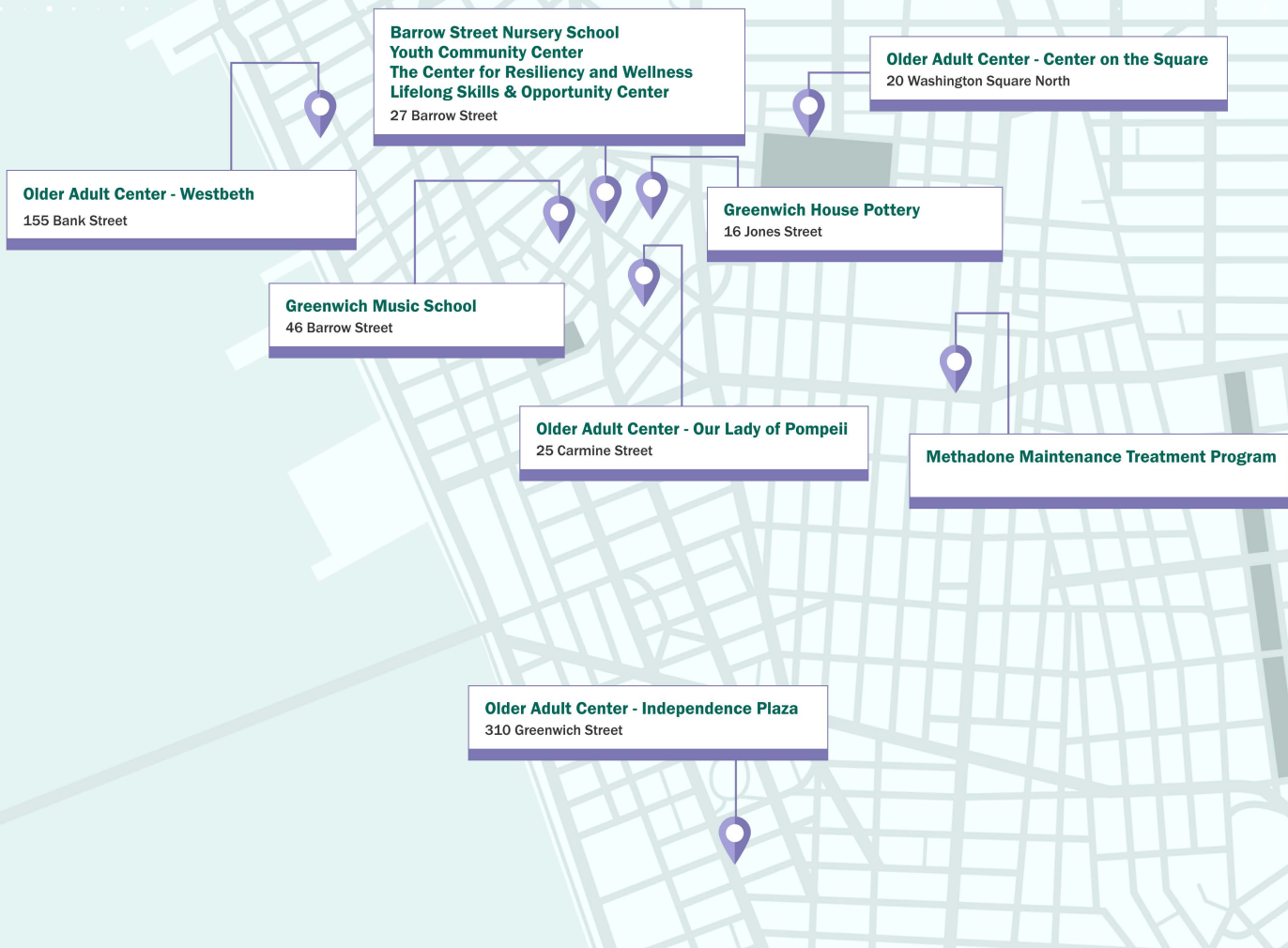




120 Years of Responding to Community Needs.

2022 ANNUAL REPORT



In Our Neighborhoods, Impacting Lives.

**Barrow Street Nursery School
Youth Community Center
The Center for Resiliency and Wellness
Lifelong Skills & Opportunity Center**
27 Barrow Street, New York, NY 10014

Greenwich House Music School
46 Barrow Street, New York, NY 10014

Greenwich House Pottery
16 Jones Street, New York, NY 10014

Methadone Maintenance Treatment Program

Older Adult Center - Center on the Square
20 Washington Square North, New York, NY
10011

Older Adult Center - Our Lady of Pompeii
25 Carmine Street, New York, NY 10014

Older Adult Center - Independence Plaza
310 Greenwich Street, New York, NY 10013

Older Adult Center - Westbeth
155 Bank Street, New York, NY 10014

A Message from Our Leadership

Dear Friends,

2022 marked 120 years of Greenwich House! To celebrate this milestone, we reflected on our legacy of responding to community needs, launched new initiatives, and expanded our existing programs to pave the way for an even deeper impact in the decades to come.

From outreach to those most affected by the opioid overdose crisis to the launch of our new workforce program amid challenging economic times, Greenwich House bore witness to challenges in our community—and stepped up to solve them.

Our team welcomed New Yorkers of all ages through our doors, providing everything from mental health support, to daily meals, to education and youth development programs, to accessible arts programming.

This was only possible because of the network of friends and supporters like you, who believe and invest in our work.

We want to thank the many individual donors, partners, foundations, neighbors, friends, members, students, and families for supporting Greenwich House and celebrating 120 years with us. We truly couldn't do this work without you!

Together, we move confidently and optimistically into the next chapter of the Greenwich House story. We hope we can count on you for your continued support of this wonderful community.

With gratitude,



Jan-Willem van den Dorpel
Board Chair



Darren Bloch
CEO & Executive Director

Contents

SERVING NEEDS IN THE COMMUNITY SINCE 1902

Celebrating a Legacy of Service 5

Our Government Partners 6

Responding to the Opioid Crisis 7

Delivering High-Quality Early Childhood Education 8

Providing Affordable Access to Trauma Informed Care 9

Supporting Workforce Re-entry and Digital Literacy 10

Providing a Platform for Rising Ceramists 11

Empowering Youth Creativity, Growth and Connection 12

Supporting Musicians Across Generations 13

Fostering Vitality, Wellness and Creativity 14

2022 ANNUAL REPORT

Our Donors 15

Our Team 16

Our Financials 17

27 Barrow Street, New York, NY 10014

  @greenwich_house  /GreenwichHouse

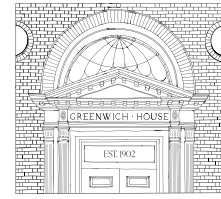
Donate at greenwichhouse.org/donate

120TH ANNIVERSARY

Celebrating a Legacy of Service

Mary Kingsbury Simkhovitch founded Greenwich House on Thanksgiving Day in 1902 to improve the living conditions for immigrants. Now, 120 years later, our work stays true to Smikhovitch's original vision of establishing a community hub of social services and the arts for all New Yorkers. Today, Greenwich House enriches the lives of New Yorkers of all ages through arts and education programs, older adult services, and social and behavioral health services.

In 2022, Greenwich House held a series of events to celebrate 120 years of service to the community.



Greenwich House

The Greenwich House **Older Adult Network** boogied down at a “Dance Through the Ages” prom-style event, featuring music from across the decades.



At our **120th Anniversary Benefit**, Greenwich House raised mission-critical funds to support our arts and education, older adult services, and mental and behavioral health programs, and also for needed renovations and repairs to our historic West Village buildings and spaces.



Greenwich House kicked off its **milestone anniversary celebration** with an event in Washington Square Park, featuring musical performances highlighting genres from over the past 120 years, tablescape pottery, musical instrument petting zoo, face painting, workshops on tai chi, art making, and training on NARCAN administration.



Our Government Partners

Thank you for your support.

Government Funders



"Now more than ever, we need to be there for our seniors. This is a 'dream team' of service providers that will offer even more amazing services to seniors in our community. I'm so excited by this partnership and proud to lend my support!"

Eric Bottcher, New York City Council Member



"Older adults have expertise and skills to contribute to the workforce, and Greenwich House's new program will help participants enhance those skills and deepen their knowledge at a time when more older adults may need to return to work to help meet inflation and the rising cost of living."

Deborah J. Glick, New York State Assemblymember



"The partnership between Washington Square Park Conservancy and Greenwich House will bring additional life to the already vibrant neighborhood of Greenwich Village."

New York State Senator Brad Hoylman



"This collaboration among Greenwich House, Washington Square Park Conservancy, and the Parks Department supports New Yorkers who need help and meet the challenges that confront this community head on. Together we are doing the important work of recovering stronger than we were before the pandemic."

Manhattan Borough President Mark Levine



"The Lifelong Skills and Opportunity Center is proof that Greenwich House continues to be a vital resource for the older adults in our community. I am proud to support this program that will benefit not just the participants, but the small businesses and communities in which they will work."

Chris Marte, New York City Council Member



COMMUNITY NEED

Responding to the Opioid Crisis

 **1,170**
patients served

 **48,312**
services provided

The Greenwich House Methadone Maintenance Treatment Program has a long-standing history of pioneering progressive and patient-centered care since its inception in the 1970s.

Building upon this legacy, the 2022 **“GH@Home” pilot program represents a paradigm shift in the approach to methadone maintenance treatment.** By cross-training certified peer counselors as home health aides, the program provides personalized care within familiar surroundings. This approach promotes independence, better health management, and individual empowerment.

In 2022, **64 participants enrolled in phase one**, experiencing improved self-esteem, self-efficacy, and overall health. GH@Home’s success showcases the organization’s commitment to innovative and patient-centered care.

It serves as a model for future expansion and advancements in addiction treatment, offering hope and transforming lives through its emphasis on dignity, autonomy, and sustained recovery.

“It’s really about medication management and harm reduction. Many of our patients tend to be very private people and some self-isolate unconsciously, so this program allows them to receive support and treatment in a familiar setting.”

As a home health aide, Elisabeth helps patients with finding health care providers and with becoming more self-sufficient. As a certified peer recovery counselor who has lived experience with substance use disorder, she shares her recovery experiences and gets to know them personally in order to build trust.



“Focusing on my health and starting to follow through with taking care of myself was a huge part of my own recovery. I really try to get the patients to understand and that their life will be better if they visit their primary care physician and go for regular checkup. I tell them you’re worth taking care of, and I know it can be difficult to accept, but it’s really the truth.”

– Elisabeth Diekmann

COMMUNITY NEED

Delivering High-Quality Early Childhood Education



229

young minds educated



\$253,936

awarded in financial aid



In 2022, **Barrow Street Nursery School** stayed true to its mission of igniting a lifelong passion for learning, the arts, and nurturing community and environment.

An incredible partnership with PS3 was continued, welcoming 30 fresh faces to the community.

In total, BSNS teachers delivered enriching learning experiences to a **total of 229 students** throughout the year, while families actively participated through meaningful dialogue and support.

COMMUNITY NEED

Providing Affordable Access to Mental Health Care



643

people received mental health care



11,321

services provided

With a diverse team of professionals, including therapists, psychiatrists, nurse practitioners of psychiatry, case managers, home health aides, and students, the **Center for Resiliency and Wellness** (CRW) delivers trauma-informed care to New Yorkers ages 3-100.

In addition to providing thousands with mental health services in 2022, CRW continued responding to the growing demand for more accessible and culturally-competent options, with an emphasis on trauma-informed approaches tailored to each individual's unique circumstances.

To address the escalating opioid crisis, the Center became a registered Opioid Overdose Prevention Program under Greenwich House's MMTP and expanded its substance use service capacity by certifying psychiatric providers to offer medication assisted treatment. Emphasizing its commitment to comprehensive care, the Center also continued growing its services for the dually diagnosed by admitting individuals with both mental health and substance use disorders.

Through Healing Hearts, an innovative drama therapy summer program developed in collaboration with the Greenwich House Music School, the Center uses play-therapy to restore age-appropriate social skills and emotional regulation in registered CRW children.



“My son has seen a child therapist at Greenwich House for some time now. Her compassion, knowledge, and life strategies have helped my son overcome many obstacles.”

– Mother on behalf of 17-year old patient

COMMUNITY NEED

Supporting Workforce Re-entry and Digital Literacy



200+ YTD

workforce and digital literacy services provided



150

members served



On November 1, 2022, the **Lifelong Skills and Opportunity Center** opened as a groundbreaking pilot program focused on **connecting out-of-work New Yorkers to job opportunities and training**, with a focus on older adults.

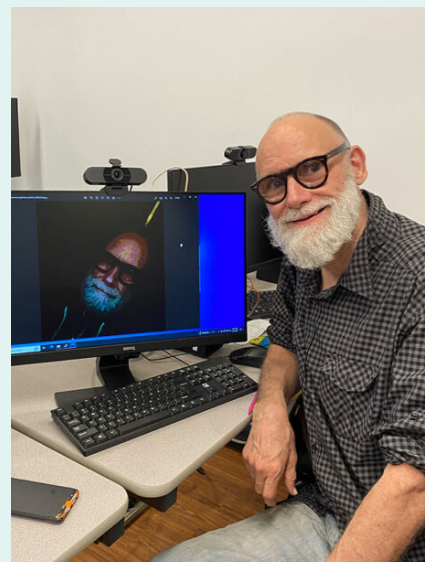
With an eye toward supporting communities long-served by Greenwich House, including individuals in recovery receiving behavioral health and older adult services, the center provided technical skills development, interview coaching and job search support. GH's workforce team also educated older adults on the employment options available to them while receiving government benefits.

The center is committed to empowering New Yorkers through case management, skills development, job training and coaching, making a positive impact on their journey to the workforce.

Gregg Powell, a 73-year-old retiree, photographer, and multimedia artist, visits the computer lab daily to edit his photos and acquire new computer skills to enhance his entrepreneurial pursuits.

“My long-range objective is to establish a website to sell my work online,” said **Powell**, who is a full-time artist, having retired from his careers in carpentry and computer programming, respectively, after 25 years. He lives on the Upper West Side and travels to Greenwich House daily to edit his photos and learn new skills.

“I am also improving my word processing skills through a class here. I use Excel to create numerous tables and graphs to chart the events in my life.”



COMMUNITY NEED

Providing a Platform for Rising Ceramists



1,200
total number
of students



130,000
pounds of clay



4
artists in
residence



7
exhibitions

Greenwich House Pottery (GHP) continued its mission of cultivating creativity in clay by providing an enriching communal space for 1,200 students to explore their artistic talents.

Additionally, GHP showcased six inspiring exhibitions, featuring exceptional artwork created by world-class contemporary artists, and emerging talent. The program's commitment to accessibility and inclusivity was demonstrated by awarding financial aid to 15% of students, ensuring that individuals from all backgrounds could engage in the transformative power of pottery.




Four artists in residence brought their unique perspectives and artistic practices to GHP. One of the program's participants, multidisciplinary artist and educator **Alva Mooses**, combines her ceramic sculptures with geological materials such as rammed earth, cast concrete, and volcanic stones, serving as commentary about the impact of colonialism on our social and physical environments.

While taking advantage of GHP's state-of-the-art facilities and resources, Alva used her residency time for artistic experimentation to further realize and elevate her creative vision.

The GHP community was invited to take inspiration from watching Alva's art practice unfold, gaining new insight from her unique approach to the ceramics medium.

COMMUNITY NEED

Empowering Youth Creativity, Growth and Connection

 **475**
students

 **30+**
STEAM classes

Our **Youth Community Center's** engaging enrichment programs combined play, movement, technology, and creativity with academic support, ensuring children had a safe space to explore their interests, discover their potential, and develop essential social skills.

With a diverse range of arts and STEM after-school classes, and summer/holiday camps, the center stimulates learning and builds character.

In 2022, **475 students** actively participated in the center's offerings, which included **30+ STEAM classes**, including cartooning, coding, tennis, woodworking, podcasting and much more.



“Knowing that our child is brought by staff to the YCC and that our child feels safe, happy and at home in the community there is wonderful! She loves each of her classes, trusted adults, and the social time until we are able to leave work and come get her. We know that her afternoons at the YCC are enriching to her emotional, social and academic well-being and are very thankful for the staff and their generosity of expertise, time, and care.”

– YCC Parent



COMMUNITY NEED

Supporting Musicians Across Generations

966
students540
hours of artist programming6,420
audience members

Greenwich House Music School (GHMS) is a vibrant hub where the beauty and transformative power of music, art, dance, and theater come to life. With a steadfast commitment to providing high-quality and affordable arts education, GHMS ensures that individuals of all ages can access the enriching world of the arts.

Thanks to the generous \$200,000 gift from the **Baisley Powell Elebash Fund**, GHMS expanded its Artist-in-Residence program providing six exceptional artists with the freedom to innovate over the next five years through the **Uncharted** concert series. GHMS, alongside the New York Presenters Consortium, identifies these talented individuals and offers them a supportive platform to develop their craft. This investment empowers artists, nurtures unique voices, and strengthens the artistic community.

In collaboration with Grand St. Settlement and Little Mozart Foundation (LMF), the Music School, expanded music and arts access to 400 HeadStart students, aged 2 to 4, in Lower Manhattan and Brooklyn.

GHMS and LMF's expert arts instructors were embedded into Grand Street's early childhood classrooms, exposing students to classical instruments through LMF's vibrant, bilingual workshops. This transformative alliance underscored a profound commitment to invigorating NYC's underserved communities with rich arts education.



Uncharted Music Series 2023
Greenwich House Music School
Photo: Peter M. Parrella

“The Elebash Fund’s generous gift enables us to continue supporting exceptional artists from diverse genres. Through our Artist-in-Residence program, we provide these talented individuals with the necessary resources to further develop their artistic vision.”

**- Rachel Black,
the director of GHMS**



COMMUNITY NEED

Fostering Vitality, Wellness and Creativity



50,734
meals served



11,688
health management & physical activity participants

Against a backdrop of COVID-19, cost-of-living inflation, and the complex landscape of food insecurity, **Greenwich House Older Adult Centers** continued to be a destination and resource for social connections, artistic exploration, and healthy living for thousands of 60+ adults in the community.

With a staggering 50,734 meals served across our 4 Manhattan locations, older adults were assured access to nourishment and a sense of community. Our new **Westbeth Center**, which opened June 28, 2022 at 155 Bank Street, is one of the few older adult sites in the City offering meals and services on weekends when so many go without.

The highly anticipated Art Show at Center on the Square returned in 2022 with much fanfare and celebration after a three-year hiatus caused by COVID-19. In addition to offering thousands of health and wellness, education, and arts classes, Greenwich House forged a partnership with the NYC Parks System improving the quality of life for older adults in downtown New York by expanding outdoor classes to include Tai Chi, dances, picnics, community gatherings, as well as drawing and painting classes at Washington Square Park. Beyond our doors, GH older adults enjoyed trips to The Whitney Museum, Broadway performances, and culminated in hosting their own Off-Broadway show hosted by Jo Firestone at GH Theater.



Roberta Curly, a retired administrator for the NYPD, became a member of the **Westbeth Older Adult Center** shortly after its inception and has since discovered a welcome and vibrant community among her fellow peers. Curly derives immense pleasure from participating in weekly poetry classes and engaging in enriching excursions to art museums and Broadway plays. In fact, she accepted a job as a poetry instructor at the Center. She even composed a heartfelt poem titled “Celebrating Center Core” to express her profound gratitude for the invaluable services and unwavering support she receives from Westbeth.

Our Donors

Thank you for your support.

\$100,000+

Anonymous, Baisley Powell Elebash Fund, New York Health Foundation, New York Community Trust

\$50,000 - \$99,999

CLAWS Foundation, Estate of Margaret Throne, van Ameringen Foundation

\$25,000 - \$49,999

Amazon, Cathy and Frank Aquila, Fan Fox and Leslie R. Samuels Foundation, Susquehanna Foundation, Wasily Family Foundation

\$10,000 - \$24,999

Karen and Edward A. Adler, Myrna Chao, Con Edison, DJ McManus Foundation, Mary Ann Eddy, Cheryl Henson, Hesed Foundation, Isaac H. Tuttle Fund, Diane C. and Gerard Koeppel, Lenore G. Tawney Foundation, Louis & Anne Abrons Foundation, Tamara A. Lynch, Morgan Stanley, Workforce Resource & Training Hub Planning Process, Elissa Kramer and Jay Newman, New York Foundation for Eldercare, Hyde & Watson Foundation, The Philip J Solondz Family Foundation, Pinkerton Foundation, Richard Steadman, The Robert Beatrice, Hompe Foundation, Tracy Dockray Rudd and Mark Rudd, Windgate Charitable Foundation Inc.

\$5,000 - \$9,999

Annie Renesselaer Tinker Fund, Stephen Bernstein, Judith Carson, Peg Downey, Lita Elvers, Arlene Kohn-Gilbert, Erin and Samir Hussein, Elliott Joseph, J.P. Morgan Charitable Giving Fund, Amy and Chris K. Kiplok, Lenox Health Greenwich Village, Elizabeth Mazza, Henry Pinnell, Helena Starcevic, The Robert & Beatrice Hompe Foundation, United Neighborhood Houses of New York, Inc., Ricarda and Jan-Willem van den Dorpel, Verizon

\$1,000 - \$4,999

Arthur J. Gallagher & Co., Nancy Langsan and Daniel K. Bernstein, Victoria and Steven Bernstein, Rene and Jared Blank, Patricia Burke, Blanche Cirker, CME Group Community Foundation, Jane and Peter Coleman, Annette and George Davidson, Bess, Oransky and Craig deLaurier, Andrea Didisheim, Joan Ellis, Fiordellisi Williams Family Foundation, Kevin Foley, GEICO Philanthropic Foundation, Donna Green, Peter Hanifin, Gary Kahn, Colleen and Matthew Kapklein, Lower Manhattan Cultural Council, Ilana and Gregory Mazlin, Katherine McMillan, New York University Community Fund, Susan Niederman, Neil Oxford, Lisa Paoella, Jeni Slotchiver, Nancy and Jay Talbot, Virginia Teller, The Hajim Family Foundation, The Hamlin Foundation, The Lucretia Philanthropic Fund, Inc., Barbara A. Payne and Roger L. Tobin, James Turnbull, Lisa and Daniel Uribe, Laura Valeroso, James Vinick, Carole Yass

\$500 - \$999

Michele Allmaras, Kristi Ambrosetti, Meredith Bagetski, Abby Bloch, Darren Bloch, Lee Botnick, Sarah and John Cave, Julie Chodos, Clearview Festival Production, Ruth Cohen, Cowgirl Hall of Fame, Downtown Women OB/GYN Associates, LLP, Leah and Noel Edelson, Valerie Kay and Bruce Graham, Deborah Glick, Mary Good, Gabrielle Fialkoff, Andrew Fleiss, Ethel and Bernard Garil, Anat Gerstein, Carmine Gibaldi, Ferne Goldberg, Tonya Herring, Jeffrey Jackman, Karl Lauby, Veronica Maginnis, Harry Malakoff, Stephen Palitz, Caroline Parker-Beaudrias, Amy Pressler, Kevin Reed, Sol Reischer, Maria Robledo and Holton Rower, Amy Segal, Wanda M. Olsen and Robert Silverstein, Kevin Smith, Christine Smith, Rena Stallings, Katya Sternberg, Scott Stokke, Beth Barry and Daniel Sussman, John Tietjen, Charles Tisch, Village Apothecary, Junko Watanabe, Eric Weinberg, James Wernz

\$250 - \$499

Susanna Aaron, Julie Salamon and William Abrams, Elaine Anderson, Kamran Ansari, Lisa Baroni, Bedford Barrow Commerce Block Assc., Lee Berresford, Mara and Roy Blitzer, Jesse Chasse, Helen Chang, Kathryn Donaldson, Ianthe Dugan, Rachel and Melvin Epstein, Susan Ferguson, Bruce Green, Gregory Farrell, Joan Flanigan, Shaiza and Jonathan Friedland, Suzanne Waltman and Martin Friedman, Jamie Gaul, Thomas Gazianis, Linda Giuliano, Christina Gleason, Nasser Hashash, Hearst Corporation, Chris Henry, Gary Herman, Susan Hochman, Robert Hoffman, Jean-Baptiste Jacquet, Betty Jones, Fiona Lennon, Frank Lopez, David Lerner, Robert Lewis, Carolyn Libretti, Lorene Straka and Alex Lue, Paul Mandell, Ashley McGuire, Network for Good, Ken Nichols, Jono Pandolfi, Zachary Perlman, Diane and Anthony Perrin, Klenton Perry, Randolph Petsche, Randi Puccio, Karen Remy, Jose Santiago, Fran Schwartz, Alan Segal, Courtney Van Fechtmann, Kimberly Phillips-Fein and Gregory T. Varga, Dani Vetere, Susan Vogel, Susan and Jeffrey Weisenfeld, Jennifer Young, Mark Young, Electra Yourke

Our Team

Celebrating a shared commitment to
meeting the needs in our communities.

LEADERSHIP TEAM

DARREN BLOCH

Chief Executive Office and
Executive Director

ALEXIS OFFEN

Chief Operating and Strategic
Officer

LAURA LANGNER

Chief Health and Human
Services Officer

ROBERT N. BLEDSOE

Director of Finance

ASHLEY MCGUIRE

Chief Development Officer

TEARANNY STREET

Director of Marketing and
Communications

OMAR AMORES

Director of Greenwich House
Youth Community Center

RACHEL BLACK

Director of Greenwich House
Music School

FABIO FERNANDEZ

Director of Greenwich House
Pottery

NICOLE PAPPAS FERRIN

Director of Barrow Street
Nursery School

LINDA GIULIANO

Director of The Center for
Resilience and Wellness

JUDY LEVIN

Director of Older Adult
Services

CAITLYN ROMANO

Program Director of
Methadone Maintenance
Treatment Program

SARA TAKI, MD

Medical Director of Methadone
Maintenance Treatment
Program

BOARD OF DIRECTORS

CHAIR

Jan-Willem van den Dorpel

VICE-CHAIR

Cathy Aquila

VICE-CHAIR

Christopher Kiplok

TREASURER

Samir Hussein*

SECRETARY

Tamara Alexander Lynch

Ed Adler

Myrna Chao

Carmine Gibaldi

Wendy Gonzalez

Diane Koeppel

Gregory Mazlin

Henry Pinnell

Mark Rudd

Laura Valeroso

DIRECTORS EMERITI

George A. Davidson*

Robert J. Egan*

Ronald H. Lamey*

Margaret B. Lowe (Deceased)

Manton B. Metcalf, III
(Deceased)

David M. Parsons

Kathryn Patterson

Alvah O. Rock

Carol A. Strickland

Steven I. Wulf

*Past Chair

Thank you to our partners in the work

Anat Gerstein, Inc.

BTQ Financial

Gallagher Benefit Services,
Inc.

Human Services Council

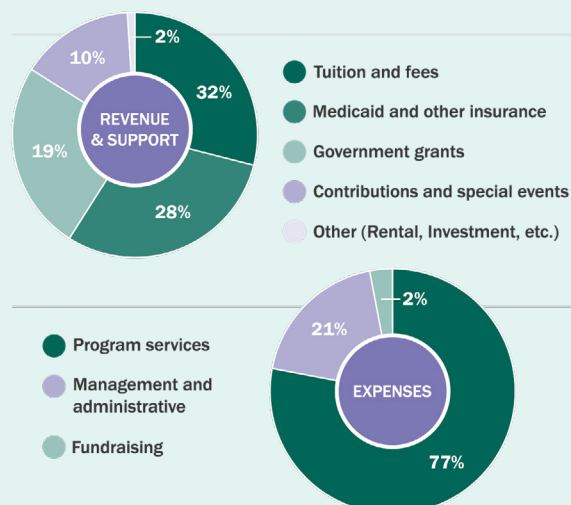
LiveOn NY

Marks Paneth, LLP

Network Doctor

United Neighborhood Houses

Our Financials



Operating Revenue and Support

Contributions and special events	\$ 2,288,676
Government grants	\$ 4,427,386
Tuition and fees	\$ 7,594,039
Medicaid and other insurance	\$ 6,601,774
Rental income	\$ 393,456
Investment returns	\$ 11,068
Other income	\$ 311,410
Forgiveness of Paycheck Protection Program	\$ 2,189,317

TOTAL REVENUE \$ 23,817,126

Expenses

Program services	\$ 17,965,989
Management and administrative	\$ 4,892,158
Fundraising	\$ 414,616

TOTAL EXPENSES \$ 23,272,763

Assets

Cash and cash equivalents	\$ 6,573,048
Investments	\$ 2,940,438
Accounts receivable	\$ 4,950,786
Contributions receivable	\$ 518,350
Prepaid expenses	\$ 405,368
Beneficial interest in remainder trust	\$ 246,047
Property and equipment, net	\$ 2,935,966

TOTAL ASSETS \$ 18,570,003

Liabilities

Accounts payable and accrued expenses	\$ 1,799,901
Accrued salaries and related liabilities	\$ 632,749
Deferred tuition	\$ 4,197,783
Line of credit	\$ 752,645
Loan Payable	\$ 492,500

TOTAL LIABILITIES \$ 7,875,575

Net Assets

Unrestricted assets	\$ 5,918,722
Temporarily restricted assets	\$ 3,064,445
Permanently restricted assets	\$ 1,711,261

TOTAL NET ASSETS \$ 10,694,428

Total Liabilities and Net Assets \$ 18,570,003

Thank You.

Greenwich House is very grateful for your ongoing and generous support of our mission.

**To make a gift, please visit:
www.greenwichhouse.org/donate**



greenwichhouse.org

27 Barrow Street, New York, NY 10014

  @greenwich_house  /GreenwichHouse